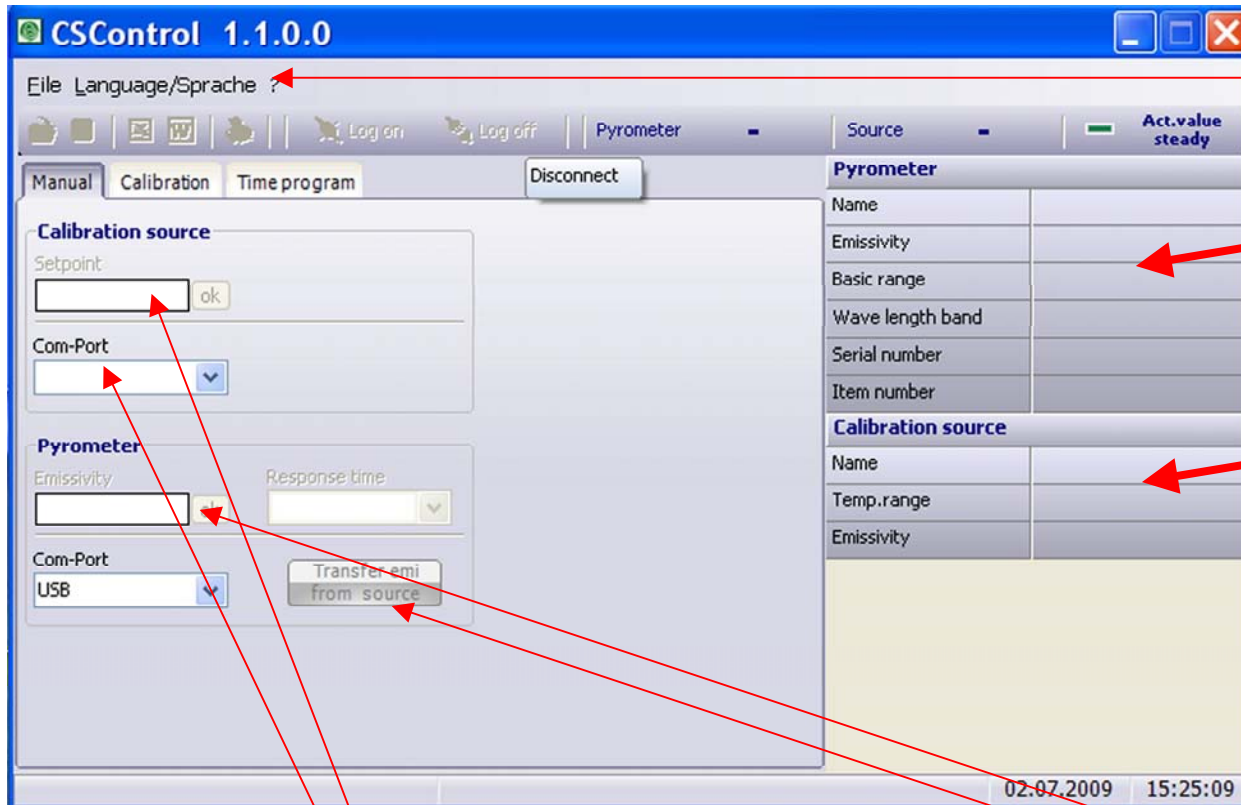


CS Control

Controlling, analysing and reporting software for DIAS blackbody calibration sources with RS485



Language selection German/English

Parameters of pyrometer:

- Insert these data manually for any pyrometer model
- Automatic data transfer for DIAS pyrometers

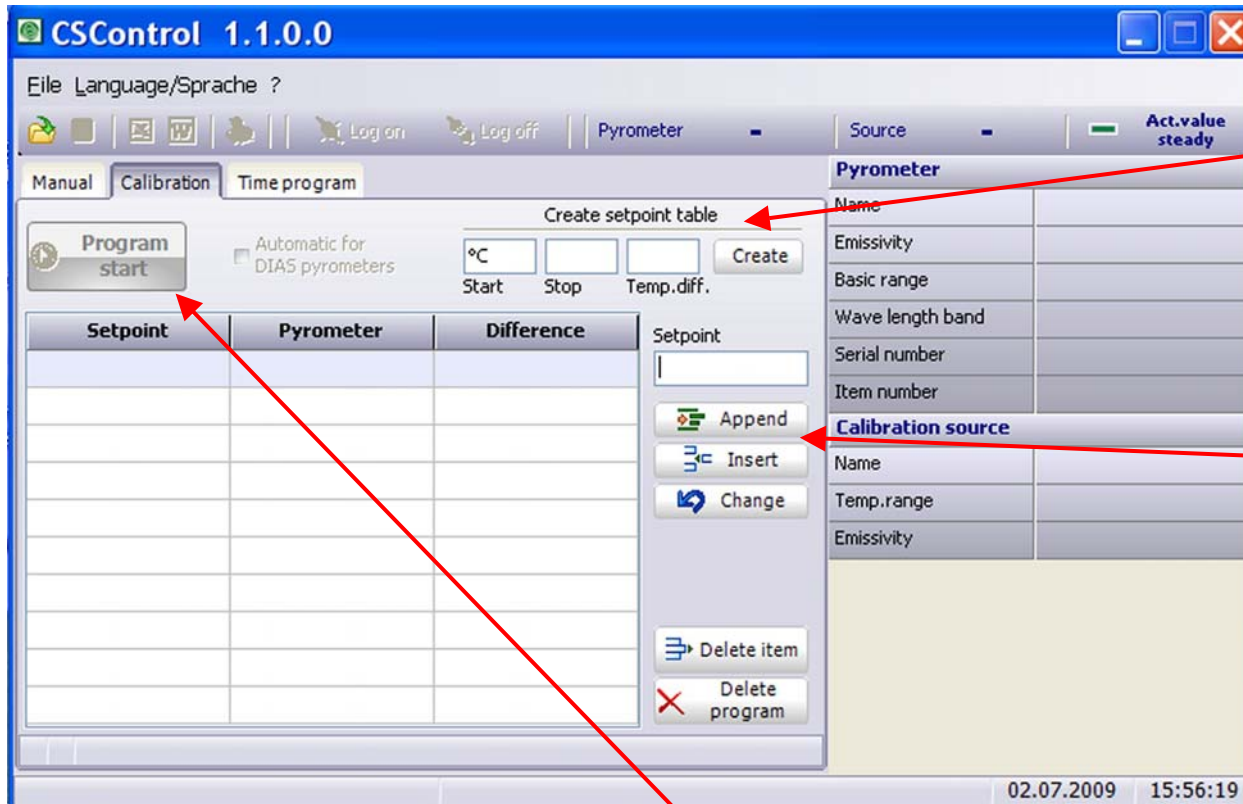
Parameters of the blackbody calibration source

- Automatic data transfer from the DIAS blackbody
- Automatic emissivity correction for the connected DIAS pyrometer corresponding to the wavelength band

Manual adjustment of the setpoint, com-port, etc.

Automatic transfer and setting of the pyrometer emissivity corresponding to the calibration source emissivity for a certain wave length band for DIAS pyrometers **or** manual E-setting for other models

CS Control



Parameters of setpoint table:

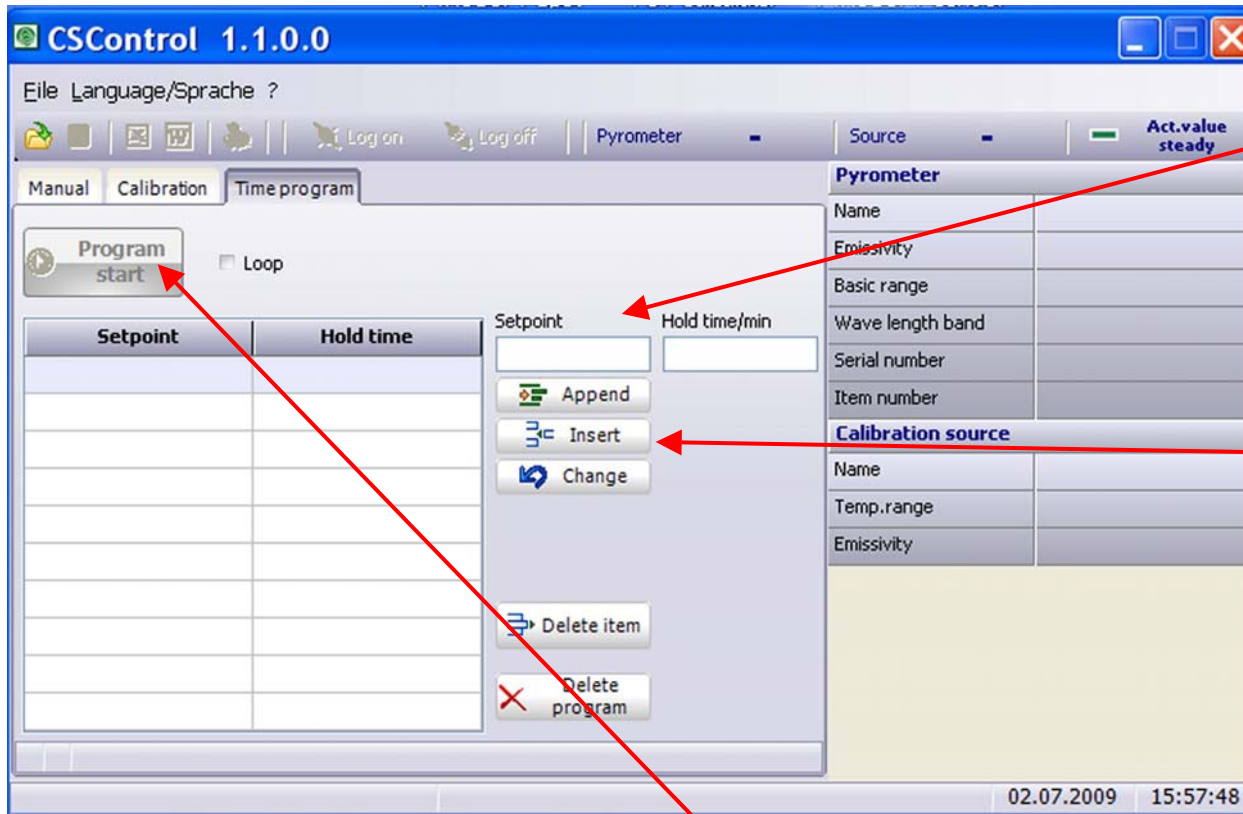
- Automatic creation of a setpoint table after insertion of starting and end temperature and temperature steps

Parameters of setpoint table:

- Manual setting of additional setpoints or deletion of single setpoints

Start of calibration program

CS Control



Time dependant setpoint program

- After input of the setpoints and the hold times the program is running automatically

Parameters of setpoint table:

- Manual setting of additional setpoints or deletion of single setpoints

Start of calibration program

CS Control report function

Report template, the design can be created individually

Report	
Report	
Project	
Name	
Order	
Remark	
Customer	
Company	
Address	
Department	
Contact person	
Phone 1	
Phone 2	
Fax	
E-Mail	
Internet	
Person in charge	
Company	DIAS Infrared GmbH
Address	Gostritzer Straße 63 D-01277 Dresden
Department	
Contact person	
Phone 1	(0351) 8 71 72 28
Phone 2	(0351) 8 71 72 24
Fax	(0351) 8 71 72 30
E-Mail	info@dias-infrared.de
Internet	www.dias-infrared.de

Report		
Measuring parameters		
Place		
Date	RP.Date	
BB calibration source	RP.CSName	
BB temperature range	RP.CSRange	
BB emissivity	RP.CSEmissivity	
Pyrometer		
Model	RP.Name	
Emissivity	RP.Emissivity	
Temperature range	RP.Range	
Spectral range	RP.WLBand	
Serial number	RP.SerialNumber	
Table		
Setpoint	Measured value	Difference
RP.Table		

Report	
Analysis	
Summary	
Recommendation	